

Bartow County School Nutrition

ANNUAL IMPACT REPORT 2022-2023



Georgia Farm to School Alliance & Farm to Early Care and Education Coalition

2022-2023 ANNUAL IMPACT REPORT



COLLECTIVE IMPACT

The Georgia Farm to School (FTS) Alliance (Alliance) serves K-12 students and systems while the Georgia Farm to Early Care and Education (FTECE) Coalition (Coalition) focuses on children aged zero to five.

The Annual Impact Report summarizes member impact data and documents progress towards the strategic plan goals during the 2022-2023 school year.

Jointly, the Alliance and Coalition work to:

- Increase knowledge and understanding of FTECE and FTS practices among stakeholders through workshops, webinars, and publications.
- Support policy, systems, and environmental changes to institutionalize FTS and FTECE.
- Evaluate activities to determine the highest impact strategies that achieve FTS and FTECE visions.

Members agree that together we hold collective potential to advance equity statewide by supporting access to healthy, fresh and affordable foods and culturally responsive nutrition education for all children and families.

Members provided **83** presentations, workshops, and other FTS professional development opportunities.

Members funded **53+** positions and contributed **29,000** hours of work supporting FTS and FTECE programs.

MEMBER ORGANIZATIONS



69%
have an
equity
statement



88%
serve under-
resourced
schools



44%
serve
rural
schools

*16 partner organizations provided data





West Broad Street YMCA

The Georgia Farm to Early Care & Education Coalition

is a network that joins stakeholders in early care, food, farming, and nutrition to coalesce resources, support farm to early care education (FTECE), and create a dialogue for building statewide programming.



Coalition members provided technical assistance, mini-grants, and/or professional development at over 130 sites and programs.

The number one way Coalition members facilitated, encouraged, and supported local procurement for FTECE programs was by partnering with local farmers.

Coalition member organizations are training practitioners on gardening, farm to school curriculum, and food systems awareness.



Lina Lane's Learning Center

"Being a member of the Georgia Farm to ECE Coalition supports us in expanding our reach and contributions to the growing farm to ECE movement. Farm to ECE programs increase student's exposure to fresh and nutritious locally sourced foods, which is aligned to our vision to ensure all children are nourished and active."

- HealthMPowers



VISION & MISSION

All Georgia early learners and their families have equitable access to nourishing, local food

Our mission is to cultivate partnerships among early care environments, farmers, and community partners to increase local food access, strengthen nutrition education, and improve health equity for families.



Kimberly Spivey Childcare

Member Organizations

A Kid's World
Action Pact*
American Heart Association*
Baldwin County School District
Bemiss Academy
Black Child Development Institute – Atlanta
Centers for Disease Control and Prevention
Children's Healthcare of Atlanta
Children's Museum of Atlanta
Common Market Southeast
ESP Head Start Inc.
FoodCorps Georgia
Flint River Fresh Inc.
GEEARS
Georgia Association for the Education of Young Children
Georgia Child Care Association
Georgia Department of Agriculture
Georgia Department of Early Care and Learning (DECAL)*
Georgia Department of Education
Georgia Department of Human Services - SNAP-ED
Georgia Department of Public Health
Georgia Family Connection Partnership*
Georgia Foundation for Agriculture
Georgia Head Start Collaboration Office
Georgia Health Policy Center*
Georgia Organics*
Georgia State University
Greenbriar Children's Center*

Hand Heart and Soul Project*
HealthMPowers*
Lina Lane's Learning Center*
Little Ones Learning Center
Miss Dayana's Daycare
New Life Learning Center
Organwise Guys
Pre-K Preparatory Learning Academy*
Professional Family Childcare Association of Georgia
Quality Care for Children*
Rex Childcare and Early Learning Center
Sandy's Sandbox
Savannah Chatham County Public Schools
Sheltering Arms
Small Bites Adventure Club
Southern Crescent Technical College
Southwest Georgia Project Teach
O' Rea Preparatory Preschool
Tee Tee's Learning Center
The Learning Tree Academy
The Wylde Center
United Way of Greater Atlanta
University of Georgia
University of Georgia Cooperative Extension
USDA Food and Nutrition Services
Voices for Georgia's Children*

The Georgia Farm to School Alliance

is a network that joins statewide agencies working in food, farming, and nutrition to coalesce resources and support for farm to school (FTS), and to create a dialogue for building statewide programming.



Morgan County School District



Hall County School District

“The Georgia Farm to School Alliance is a great way to stay connected with the work being done in Farm to School around the state and in our region, build connections, and access resources.”

-Wylde Center



georgia
farm to school
alliance

MEMBER ORGANIZATIONS



\$11 million

purchased from local farmers



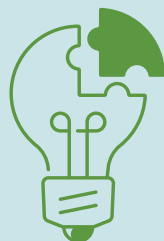
1200

trained practitioners



35

awarded FTS grants



79%

increased understanding of farming, food systems, and nutrition

The Farm to School model will be seen as the best way to equitably connect cafeterias, classrooms, and communities to enhance the health and development of Georgia students.

Our mission is to engage Farm to School stakeholders by providing resources, professional development, and recognition programs to increase the awareness, access and consumption of locally grown food in school meals and beyond.



The Learning Tree Academy

Member Organizations

Athens Land Trust
American Heart Association*
Captain Planet Foundation
Centers for Disease Control and Prevention (CDC)
Children's Healthcare of Atlanta
Columbus Botanical Gardens
Common Market Southeast*
Flint River Fresh Inc.
FoodCorps Georgia
Georgia Agricultural Education
Georgia Department of Education*
Georgia Department of Public Health
Georgia Family Connections Partnership
Georgia Farm Bureau
Georgia FCCLA
Georgia Health Policy Center*

Georgia Organics*
Georgia School Nutrition Association
HealthMPowers
Kaiser Permanente
Muscogee County Schools
Newton County School District
Royal Food Service
Savannah Chatham County Schools
Small Bite's Adventure Club
The Food Mill Columbus
The Wylde Center*
United Way of Atlanta
University of Georgia
University of Georgia Cooperative Extension
USDA Food and Nutrition Services Southeast

*Indicates member completed the 2022-2023 Annual Impact Survey